

## SEARCH MODES



### ALL-TERRAIN

Great for high-trash recreational areas, fields and historical locations including most general detecting.



GENERAL



FAST



CONDUCTORS  
LOW



CONDUCTORS  
HIGH



TRASH  
REJECT



### BEACH

Perfect for all salty conditions — dry sand, wet sand, surf and underwater.



GENERAL



CONDUCTORS  
LOW



DEEP



SURF &  
SEAWATER



### GOLDFIELD

Ideal for gold nugget prospecting in mineralised goldfield locations.

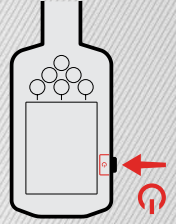


GENERAL

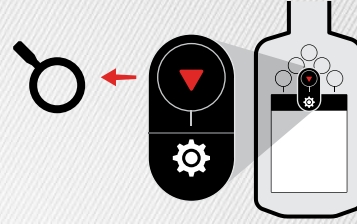


Can't decide which Mode to use?  
Use the General Mode for your detecting location.

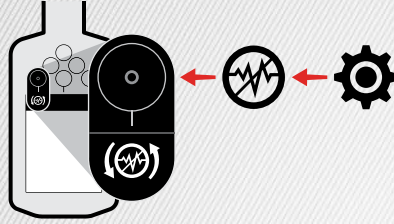
## QUICK START



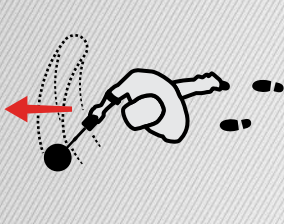
1  
TURN  
ON



2  
SELECT  
SEARCH MODE



3  
CANCEL  
NOISE



4  
GO  
DETECTING



Scan the QR code or visit [www.minelab.com/manticore](http://www.minelab.com/manticore) for all product downloads including the full-length User Manual, specifications, software updates and learning resources.

Get these languages and more:

EN English    FR français    PT Português  
DE Deutsch    JP 日本語    RU русский  
ES Español    KO 한국어    ZH 中文

For product compliance information:

Settings > General Settings > Compliance

[minelab.com](http://minelab.com)

4901-0315-1

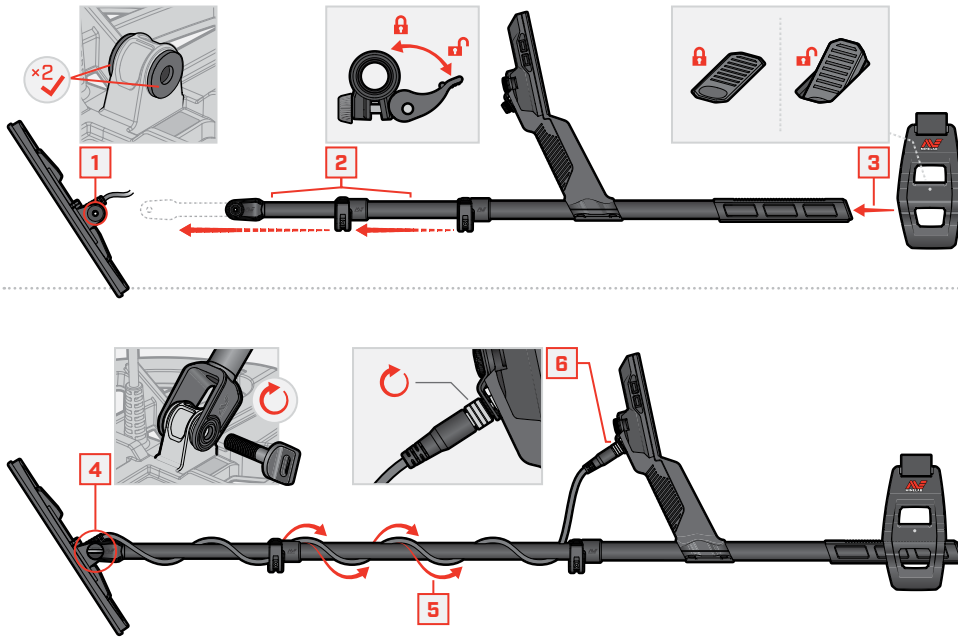


**MANTICORE**

GETTING STARTED GUIDE



# ASSEMBLY



## TIGHTEN CAMLOCKS

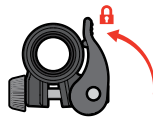
Tighten the Camlocks if they slip or become loose.



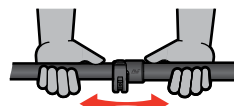
Open



Tighten gently in increments



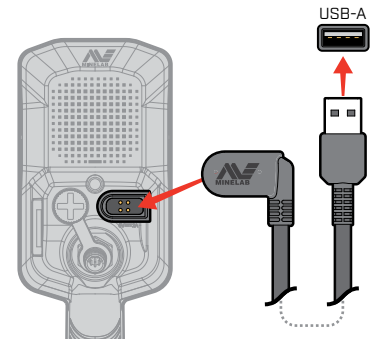
Close



Check and repeat if needed

# CHARGING

**7-8 HOURS**



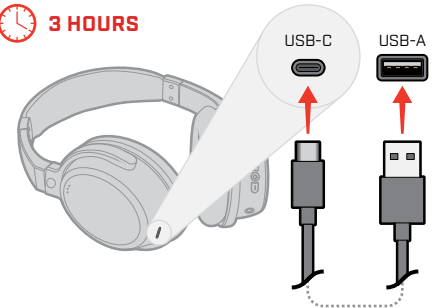
**CAUTION:** Charge your detector with a good-quality USB charger that has a minimum charging capacity of 2 A @ 5 V. Risk of USB charger failure if a low-quality charger is used.

Look for the following marks on USB chargers:



**CAUTION:** Only charge the detector in ambient temperatures between 0°C and +40°C.

**3 HOURS**



# CONTROLS & DISPLAY



## SETTINGS MENU

Press **▲** from the Detect Screen to open the Settings menu.



Back

- General Settings
- Frequency
- Audio Theme
- Target Tones
- Ferrous Tones
- Ferrous Limits
- Discrimination Pattern
- Recovery Speed
- Ground Balance
- Noise Cancel
- Search Mode
- Volume

**Flashlight**

**Tracking Ground Balance**

**Wireless Audio**

**Light Sensor**

**Headphones Connectivity**

**Battery Level/Charging**

**Target ID Number**

<b>88</b>	<b>88</b>	<b>00</b>
Conductive ID	Conductive ID with Ferrous Indicator	Salt Indicator (Beach Modes only)

**Wireless Audio On/Off**

**Target Depth Indicator**

**Side Soft Key**

**ID MAP**

Ferrous Limits | Target Trace (e.g. nail) | Discrimination Pattern | Target Trace (e.g. coin)

More Ferrous | Less Ferrous

0 | Target ID Scale Conductivity | 99

**Charge Status LED**

**Large Metal Overload**

**Search Mode**

**Frequency**

**Power**

**Sensitivity Level**

**Backlight/Lighting**

**Action Bar**  
Actions/icons change depending on settings or the current screen

**Action Bar Soft Keys [x2]**

**Sensitivity**  
Press **◀/▶** from the Detect Screen to adjust Sensitivity

**Pinpoint**  
Press **▼** from the Detect Screen to toggle Pinpoint mode

**Navigation Arrows [x4]**